

Place:
Arden Community Hall
636 Hall Rd
Arden, WA



Club Meetings:
Third Tuesday of the Month
at **5:30 PM**

The Panorama Prospector

December 2024

PANORAMA GEM AND MINERAL CLUB

Minutes for the November 19, 2024 General Meeting

Meeting called to order 6 pm

Vote for officers: secretary still needs to be filled

Frank was not at the meeting because he was preparing for surgery

January will be discussing show set up

February will be set up for the library showcase

****December January February meeting start time is changed to 5:30.****

Christmas party: Betty sent around sign-up for desserts, sides, salads, if you want to participate in the gift exchange the limit is \$10

Scholarship: See included article

Donated pizza for break!

Auction

*Merry Christmas to
all and a prosperous
New Year!*

Scholarship Information

Provided by Ginger Pitman

Jim and Betty Peters, along with Ginger and Johnie Pitman would like to present our research on our scholarship funds staying local through our community colleges.

We met with Brian Moyer at Colville Community College. All scholarship funds are given through Community Colleges of Spokane which has campuses in Spokane, Colville, Newport, Republic and Inchelium.

We met with the manager of the Community College Foundation, Christine DeGeare, at her office in Spokane.

All registrations are done online and everyone applying for scholarship funds has access online. Any student can apply.

We would set up a fund in our name starting at \$5000. We could add to that each year. We can set up our own requirements, such as living in Stevens County, graduating from any public or private school in the county, what programs we want to fund, and any other specifications we want. We can fund any age group, young or old.

Our hope is to keep our funds local and the foundation does all the selections and distributions according to our wishes. This will free the club from all the time, travel and hassle that goes into our scholarships fund now.

Identify the “Rock or Mineral”

This month’s rock or mineral:

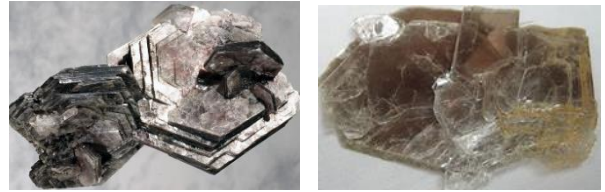


Colemanite – A borate mineral known for its unique crystal structure and chemical composition. First discovered in near Furnace Creek in Death Valley in 1883 it was named after William Tell Coleman. Owner of the “Harmony Borax Works” where it was found. It is commonly found in borate deposits in California, Turkey and Argentina. It is an important ore of boron and was the main boron ore until the discovery of Kernite in 1926. Colemanite is a secondary mineral formed by alteration of borax and ulexite. It is found in evaporated deposits in arid, alkaline, lacustrine environments, usually in warm temperatures. One of the largest deposits of this borate mineral is the Borax mine in Boron, California operated by U.S. Borax, part of the Rio Tinto Group. This mine was established in the 1920’s as an underground operation, in 1958 it was expanded to an open-pit operation. Today it is still in operation as the largest open pit mine in the United States. It produces about a third of the world’s supply of refined borate products.

Colemanite, with a chemical formula of $(Ca_2B_6O_{11} \cdot 5H_2O)$ or $(CaB_3O_4(OH)_3 \cdot H_2O)$, can be identified by its characteristic monoclinic crystal structure with a tendency to form prismatic crystals. It is usually pale yellow to white in color with an Adamantine or Vitreous luster. On some occurrences it can be brown, orange or gray. Colemanite can be translucent or transparent, it will fluoresce a bright, pastel yellow under ultraviolet light and can phosphoresce a pastel green. It has a hardness of 4.5 on the Mohs scale, and its specific gravity is 2.4. It is

also known for its perfect cleavage and its tendency to form prismatic crystals.

This month’s rock or mineral:



The Year in Pictures!





Membership Dues:

\$20.00 per household per year is due to the club Treasurer Frank Stratton on the third Tuesday of November for regular members. Dues can also be sent to: Panorama Gem and Mineral Club c/o Johnie Pitman, 701 B Williams Lake Rd, Colville, WA 991114.

Webpage: <http://panoramagem.com/>

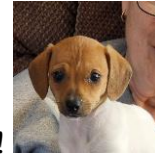
Facebook Group: [Panorama Gem & Mineral Club](#)

We, **The Panorama Gem and Mineral Club**, are a multi-faceted group of mineral-minded people. Our proud members include some real gems, a few fossils, and even some diamonds in the rough. A few have lost some of their marbles, but they know where to get more! A few need to polish their coordination because they are always tumbling! And some are miners who use the “silver pick” as their tool of choice! It should be crystal clear, that we all enjoy this unique conglomeration and above all else we strive to **HAVE FUN**. And we never throw stones (away).

A Quick Note from The Editor (Glynis)

Thank you to those who contributed to this issue. If you have a special story to share, please contribute to OUR newsletter! Send ideas for articles, internet finds, jokes, pictures, adventure stories, science articles or your own articles to me.

gghull@comcast.net



Guinevere says “Hi”!

Refreshment Schedule for 2024

Last names that begin with the letters posted bring refreshments for that month

January – H, I, J

February – K, L, M

March – N, O, P

April – Q, R, S, T

May – W, A, B, C

June – D, E, F, G

July – H, I, J

August – Club Picnic

September – K, L, M

October – N, O, P

November - D, E, F, G

December – Christmas Party

Panorama Gem and Mineral Club: Organizational Chart

Officers

President:	Lynne Calvert		559-906-5923
Vice-President:	Bob Bristow		509-935-4375
Secretary:	Glynis Hull	gghull@comcast.net	509-981-9714
Treasurer:	Frank Stratton		509-207-8503
Trustee 1:	Kevin Youngblood		509-680-0207
Trustee 2:	Jim Peters		509-992-6921
Trustee 3:	Cyndi Doppler		509-216-5473

Committee Chairs

Program Coordinator:	Sheila Stratton		509-207-8506
Hospitality:	Betty Peters		509-992-6921
Historian:	Sheila Stratton		509-207-8506
Newsletter:	Glynis Hull	gghull@comcast.net	509-981-9714
Show Chair	Johnie Pitman		509-684-8887